

# Sandspit Skatepark & Pump Track, Haida Gwaii

**Concept Presentation**  
**September 21<sup>st</sup>, 2022**



# Agenda

- Welcome & Introductions
- Project Overview
- Design Development Process
- Final Concept Presentation
- Address Comments & Questions



# What is this project all about?

- Skateboarding and other action sports were identified as a priority for investment on Haida Gwaii by the North Coast Regional District
- The new skatepark will partially replace the old tennis court in Sandspit, adjacent to the baseball field at Beach Road & Park Road
- New Line Skateparks has been hired to work with the NCRD and the community to design the new skatepark facility.
- After completing the skatepark design phase of the project, the NCRD has decided to explore the addition of a pump track to supplement the skatepark terrain, based on user feedback and requests





# Sandspit, Haida Gwaii – K'il Kun

The North Coast Regional District acknowledges the traditional territory of the Haida on which this meeting takes place.

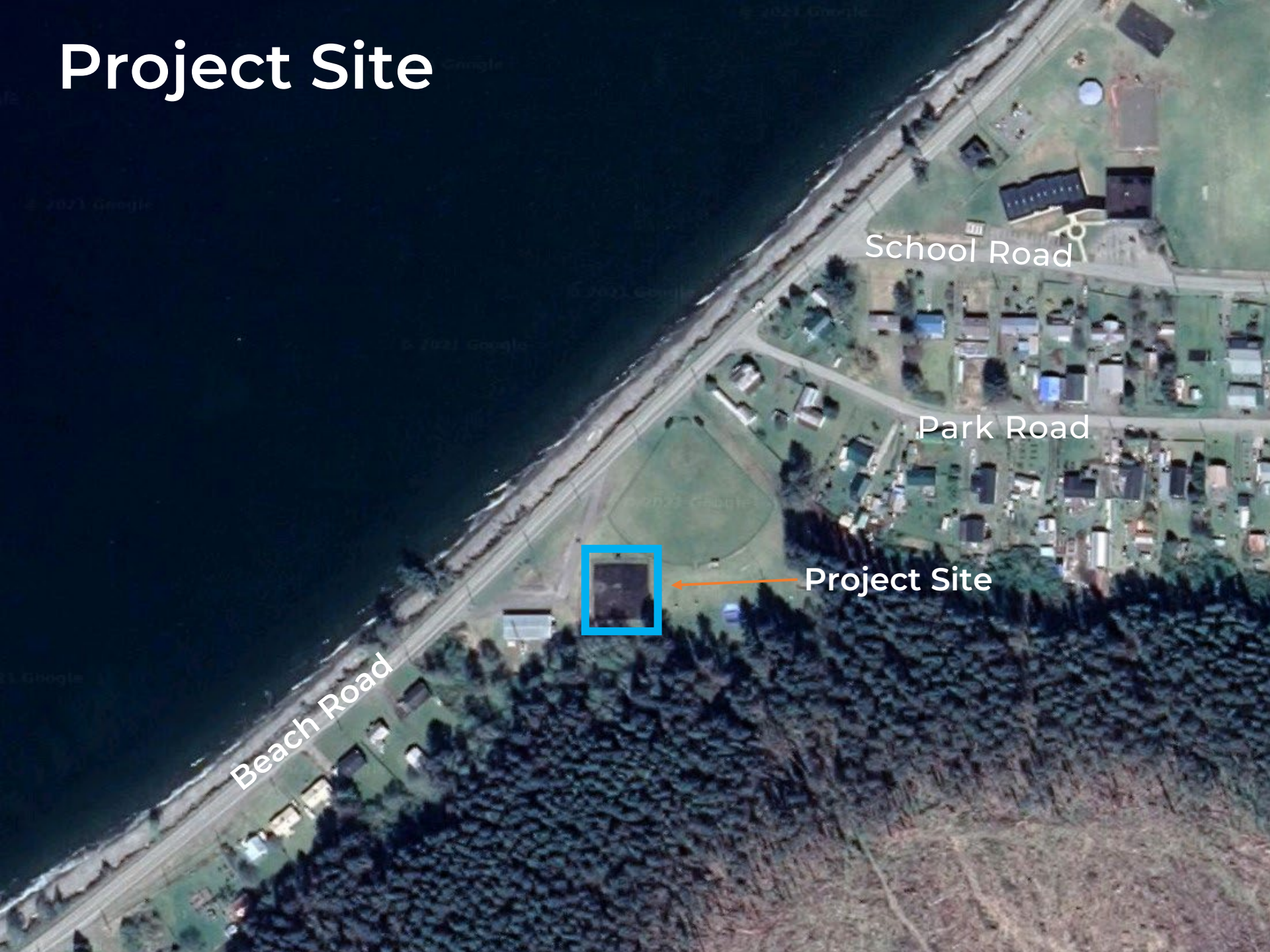
## Decision Making

The Haida Gwaii Solutions Table was established in 2011 and is the process by which licensees, tenure holders and other developers go through to propose any development on Haida Gwaii. It is a shared decision-making process that resulted from the signing of the Kunst'aa guu – Kunst'aayah Reconciliation Protocol in 2009.





# Project Site



# Survey #1 Feedback



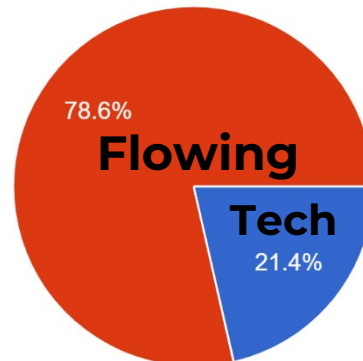
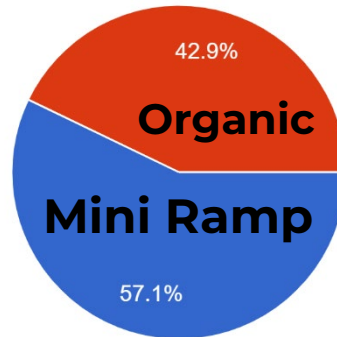
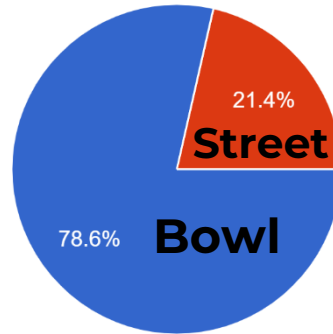
**Bowl/Transition Terrain**



**Mini Ramp/Half Pipe Style**



**Flowing Street Terrain**



Survey #1 for the Sandspit Skatepark received 42 total responses.

So far, a clear preference of terrain styles indicates that users want:

- A transition-oriented park with good flow, plus a few essential street features
- An area that functions as a mini ramp but with some unique organic features
- High-flow street terrain for jumps, speed and catching air
- The consideration of a roof structure for a covered riding area as a future phase



# Additional Community Feedback

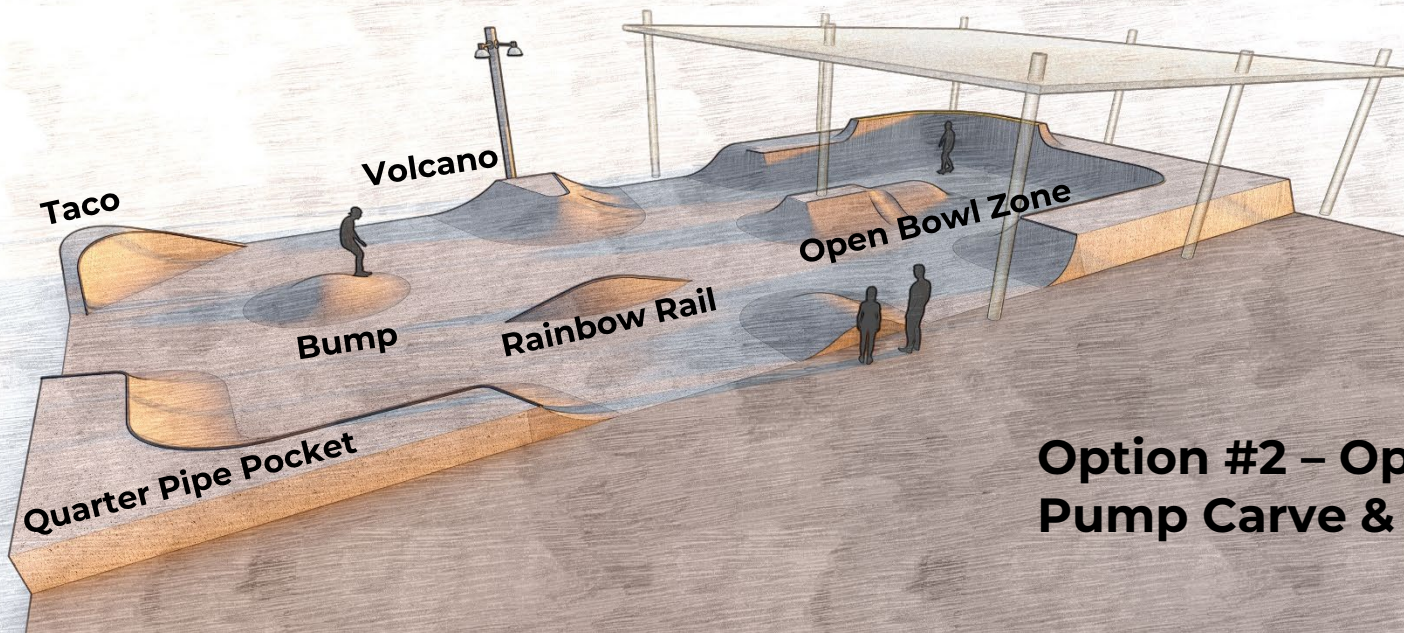
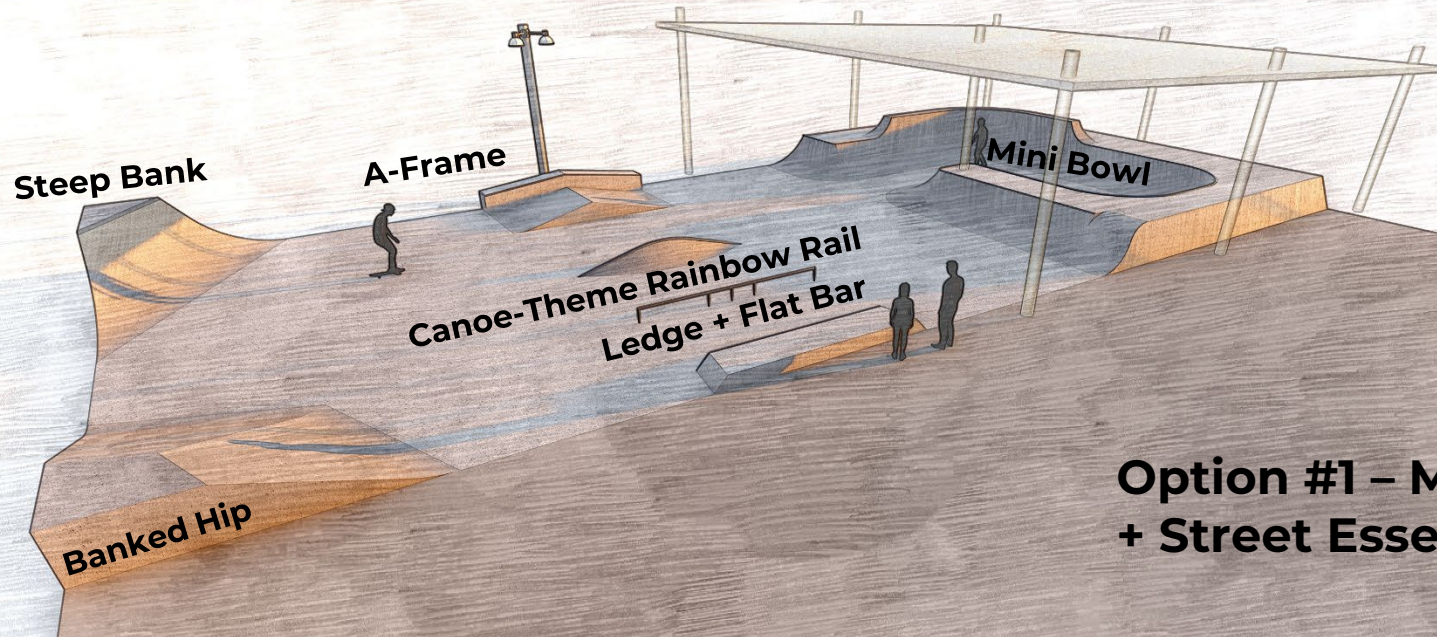
Survey respondents had the opportunity to provide additional comments. Key feedback included:

- Bike track infrastructure would be very popular for mountain and BMX bikes
- Pump track style terrain would also be very popular and possibly better used
- Covered spaces and lights would allow for much greater opportunity for use
- Incorporation of artistic features, signage, murals and local culture highly desired
- Collaborating with indigenous communities in planning and aesthetic is essential
- Amenities such as seating, shade & shelter, water, and washrooms would be well utilized
- Considering a roof in the design for potential covered riding area





# Conceptual Design Directions

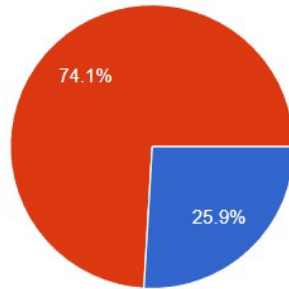




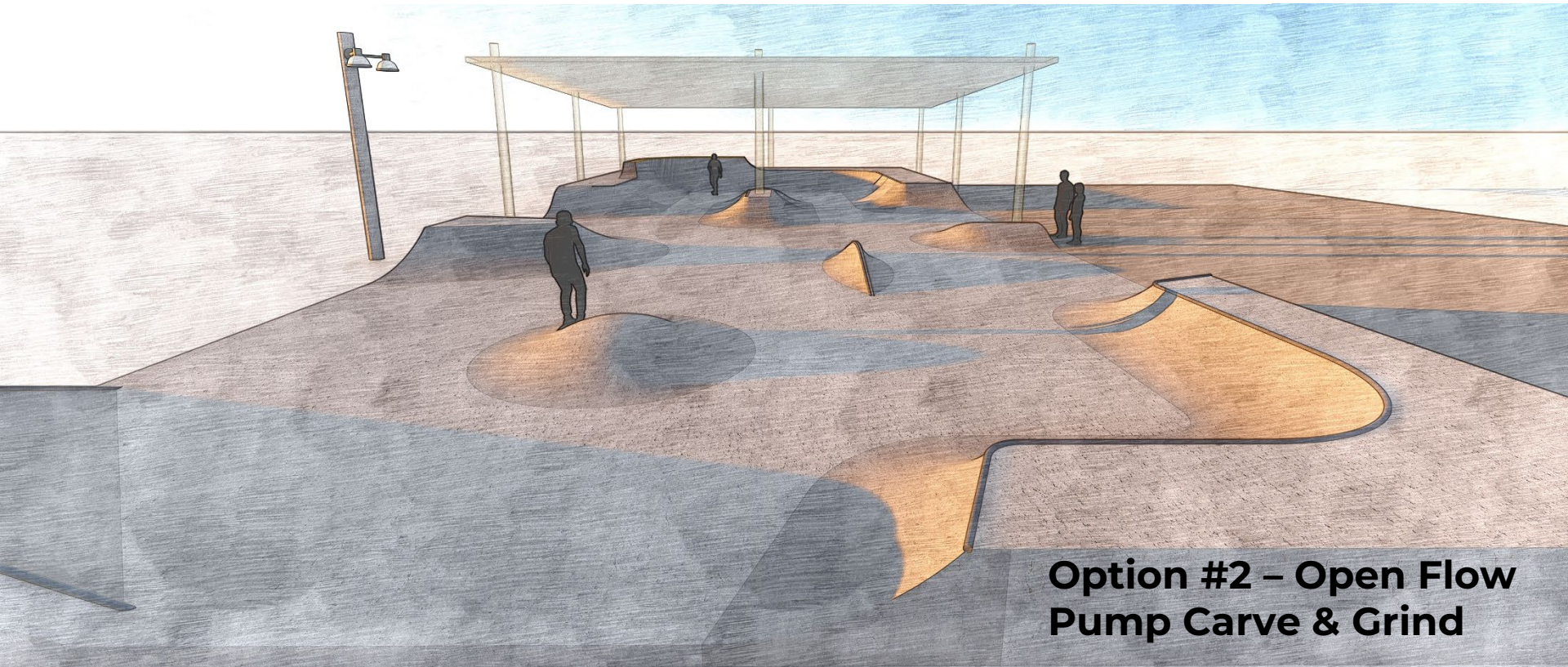
# Survey #2 Terrain Feedback – Overall Preference

What is your overall preferred design approach?

27 responses



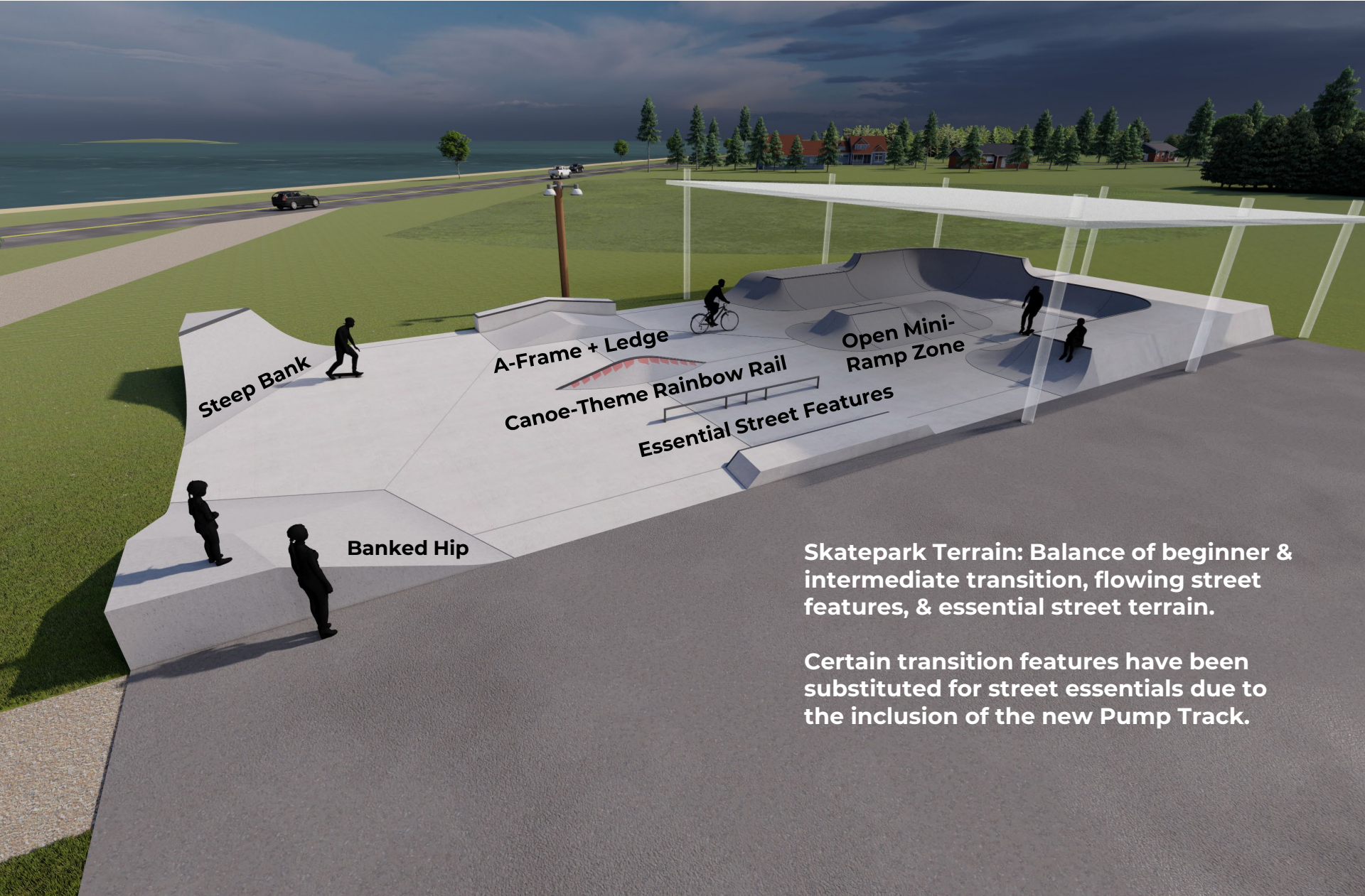
- Option 1 - Mini Bowl + Street Essentials
- Option 2 - Open Flow + Pump, Carve & Grind Features



**Option #2 – Open Flow  
Pump Carve & Grind**



# Final Skatepark Concept



**Skatepark Terrain: Balance of beginner & intermediate transition, flowing street features, & essential street terrain.**

**Certain transition features have been substituted for street essentials due to the inclusion of the new Pump Track.**



# Final Skatepark Concept





# Final Skatepark Concept



# Final Skatepark Concept & New Pump Track Addition



**Newly added Pump Track Zone!**



# Design Options

The Sandspit Pump Track's final design will be limited by space and budget, but still has room for a variety of feature options to be considered.

Questions to consider for discussion:

Should it focus on beginner level riding, or include more advanced options?

Variety vs. size – Should more terrain variety or a longer track be the priority?

Traffic flow – Crossing vs. separated lanes, options and conflicts

Integration with Skatepark

Materials – Costs, experience, and maintenance





# Pump Track Survey Feedback

## Skill Level

### Beginner Style

- Approachable size features
- Minimal traffic conflict
- May allow for longer track

*Preferred community direction*



### Advanced Style

- Larger, faster features for more dynamic riding
- More opportunities for progression and tricks
- More expensive, more traffic conflict, shorter track length





# Pump Track Survey Feedback Configurations

Lanes, separation, merging and cross over points are a key consideration for this pump track. How do you want the riding experience to function?

*A single continuous loop was the preferred community direction*



Single Continuous Loop



Parallel Merged



Merging Single Loop



# Pump Track Design Options

## *Advanced Features*

Certain skatepark-style features could be added to the pump track for more variety and advanced riding options, while also adding cost and requiring more space.

*The quarter pipe feature followed by a jump were the top two community preferences*





# Skatepark Integration

Currently the pump track terrain is designed without an integrated connection to the skatepark.

Should that connection allow for the separate zones to safely function independent of each other or should they offer a variety of connection points?

*The community preferred multiple integrated connections, which are possible but will be dependent on budget, phasing and material*



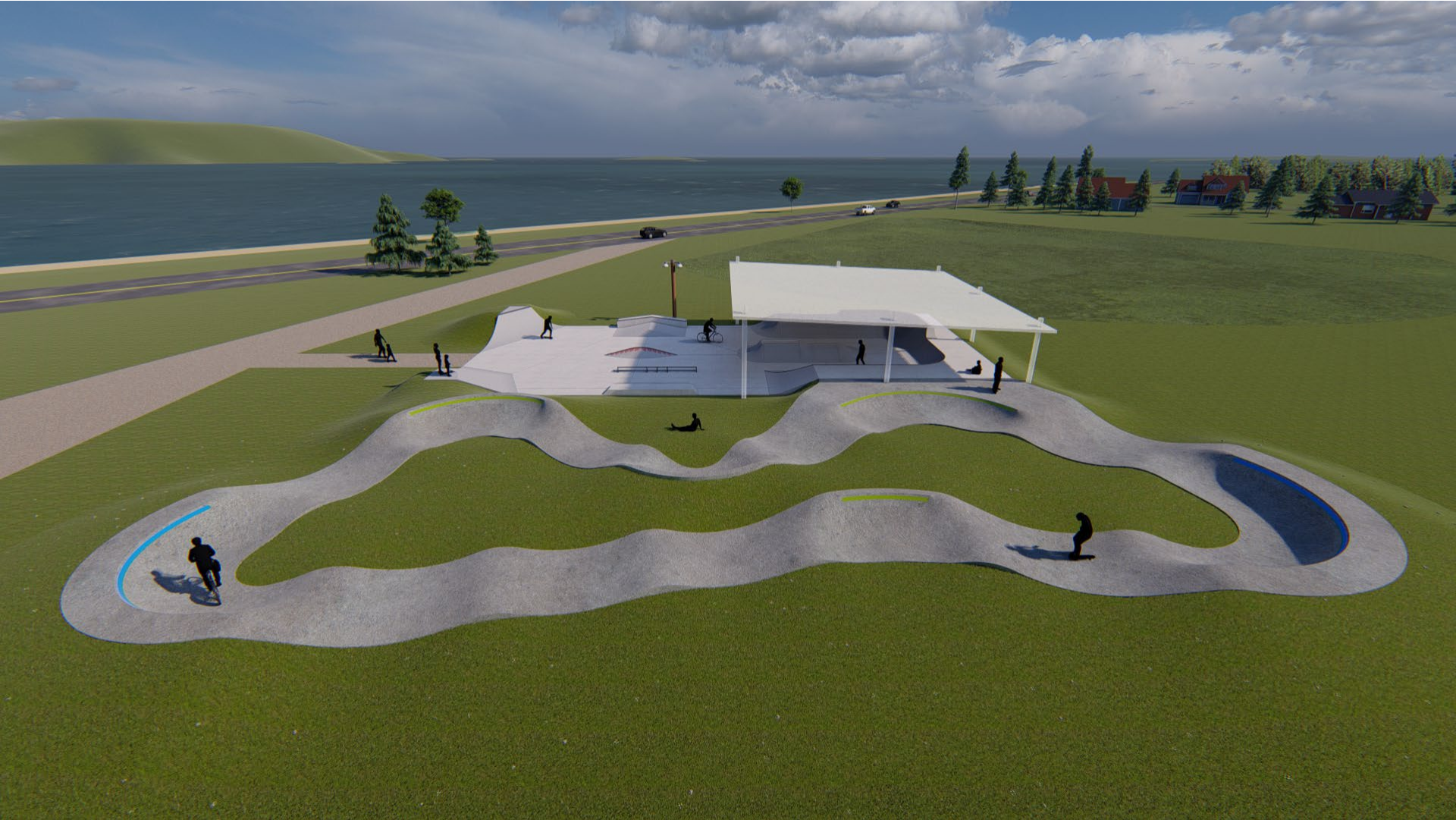
*Functionally Separate Pump Track*



*Multiple Integrated Connections*

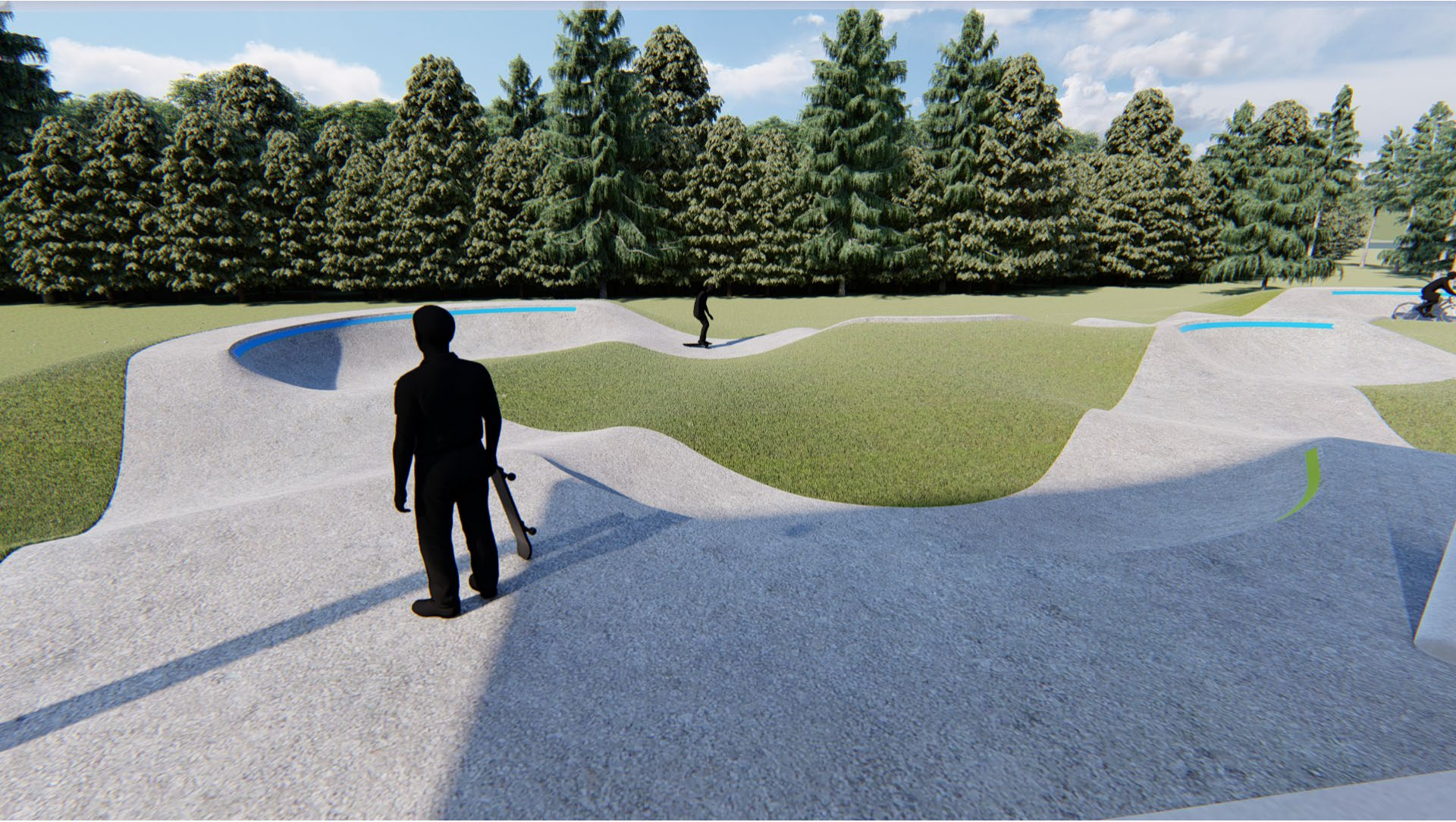


# Final Skatepark & Pump Track Concept



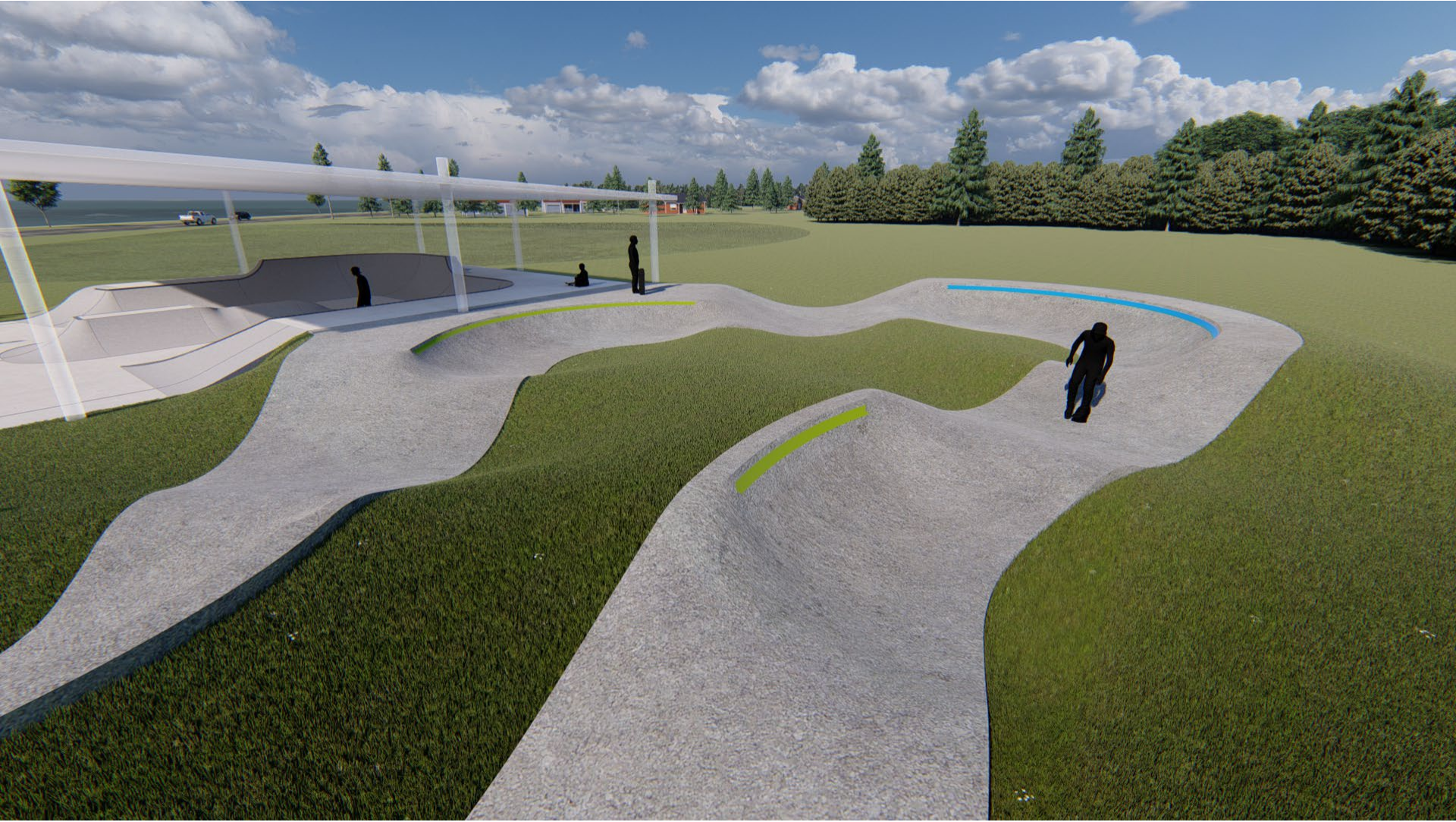


# Final Skatepark & Pump Track Concept





# Final Skatepark & Pump Track Concept





# Final Skatepark & Pump Track Concept



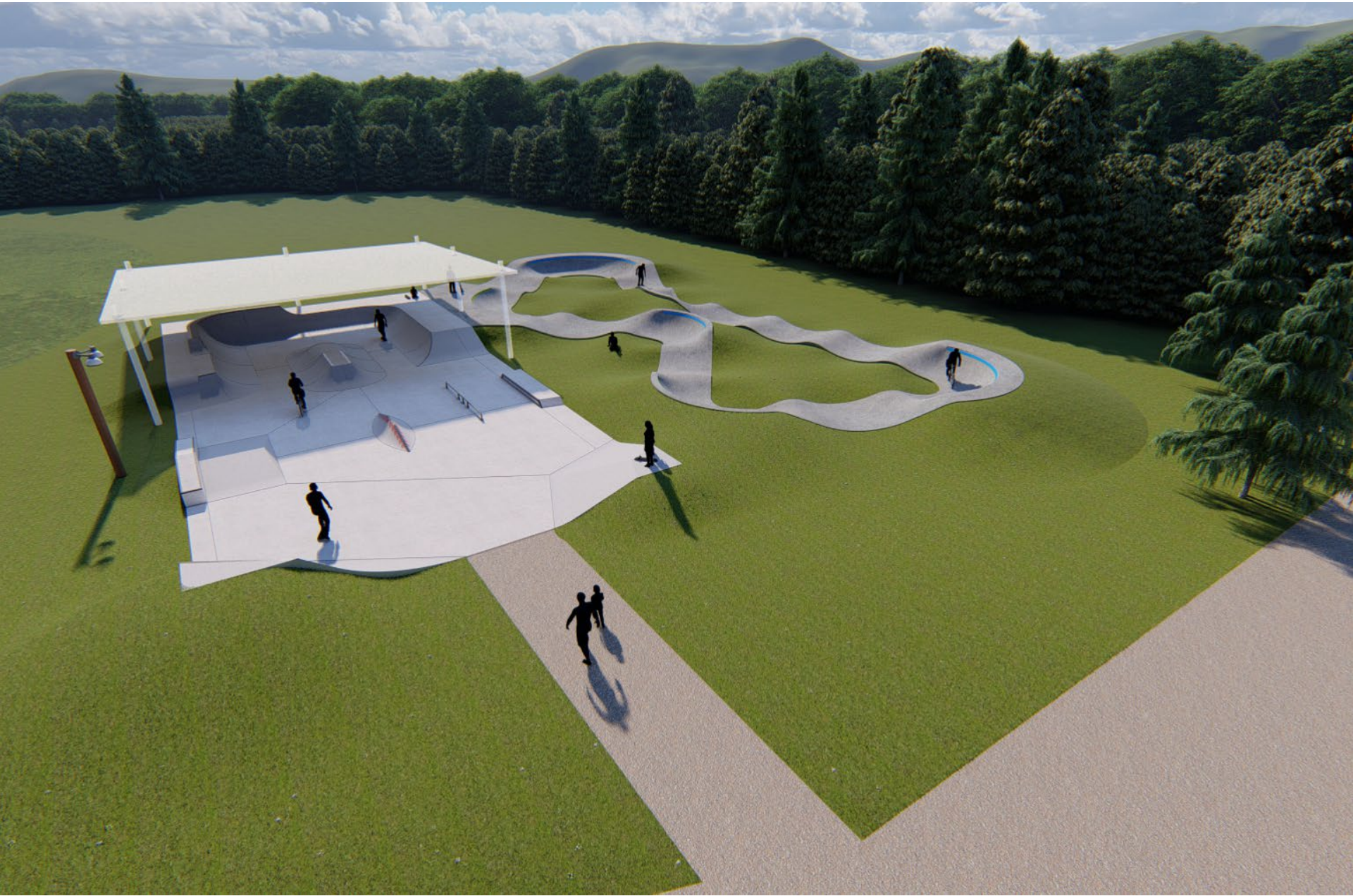


# Final Skatepark & Pump Track Concept





# Final Skatepark & Pump Track Concept





# Next Steps



For project updates visit:

<https://www.ncrdbc.com/development/special-projects/sandspit-bc-skatepark>

