

**SKEENA-QUEEN CHARLOTTE REGIONAL DISTRICT
BY-LAW NO. 400**

A By-Law to Adopt a System of House Numbers for rural Graham Island

WHEREAS the Extended Service House Numbering Bylaw No. 244, 1994 authorizes the Regional District to number buildings within the District;

NOW THEREFORE the Skeena-Queen Charlotte Regional District, in open meeting assembled, enacts as follows:

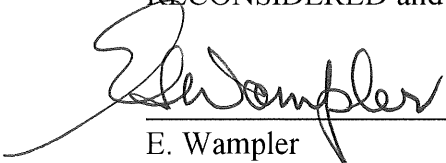
1. A system of house numbering is hereby adopted for rural Graham Island. The said system shall be shown on the plan attached to and forming part of this Bylaw; which plan shall be known as "Schedule A of Bylaw No. 400";
2. Numbers are hereby assigned and shall be affixed to buildings and structures as indicated on the aforementioned plan shall be shown as "Schedule A of Bylaw No. 400";
3. Numbers assigned to buildings and structures shall be so placed as to be easily read from the road upon which such building or structure is deemed to front as indicated by the numbers assigned on the aforementioned Schedule 'A';
4. The Board may, at its discretion, order that any numbers attached or otherwise applied to any building or structure that are incorrect and cause confusion, be removed; and
5. This Bylaw may be cited as "Skeena-Queen Charlotte Regional District rural Graham Island House Numbering Bylaw 400, 2000.

READ A FIRST TIME this 23rd day of June, 2000.

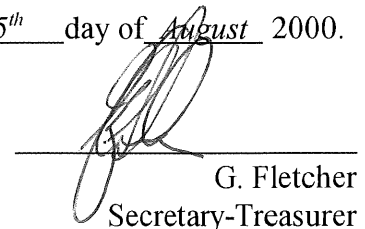
READ A SECOND TIME this 25th day of August, 2000.

READ A THIRD TIME this 25th day of August, 2000.

RECONSIDERED and FINALLY PASSED AND ADOPTED this 25th day of August 2000.



E. Wampler
Chairman



G. Fletcher
Secretary-Treasurer

I hereby certify that this is a true copy "Skeena-Queen Charlotte Regional District rural Graham Island House Numbering Bylaw 400, 2000.

Secretary

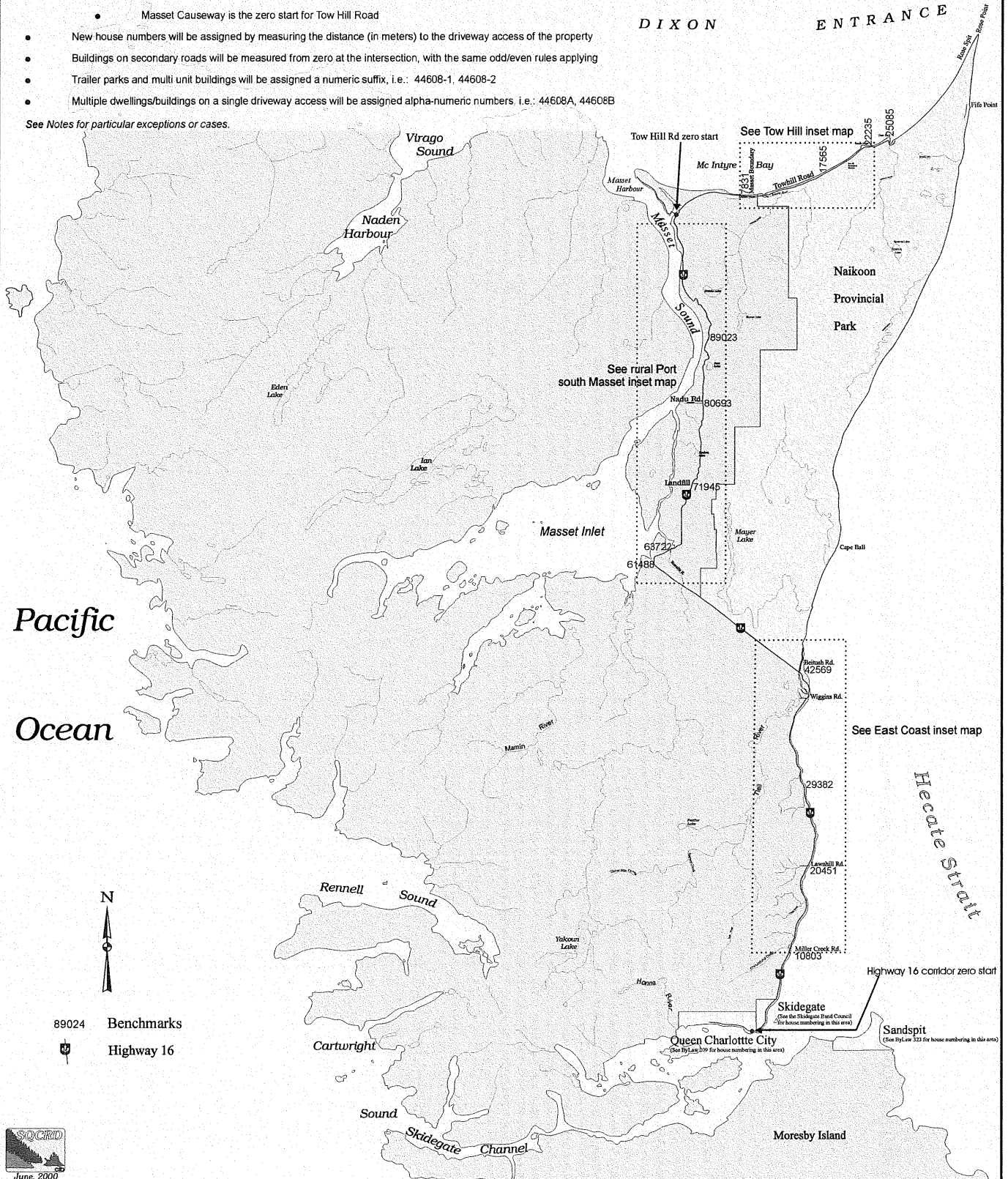
Date

Graham Island House Numbering

Main Principals:

- Odd house numbers are located on the east and north side of roadways
- Even house numbers are located on the west and south side of roadways
- House numbers are generated using the distance from a fixed zero starting point:
 - Skidegate Landing Ferry Dock is the zero start for the Highway 16 corridor;
 - Masset Causeway is the zero start for Tow Hill Road
- New house numbers will be assigned by measuring the distance (in meters) to the driveway access of the property
- Buildings on secondary roads will be measured from zero at the intersection, with the same odd/even rules applying
- Trailer parks and multi unit buildings will be assigned a numeric suffix, i.e.: 44608-1, 44608-2
- Multiple dwellings/buildings on a single driveway access will be assigned alpha-numeric numbers. i.e.: 44608A, 44608B

See Notes for particular exceptions or cases.



89024 Benchmarks

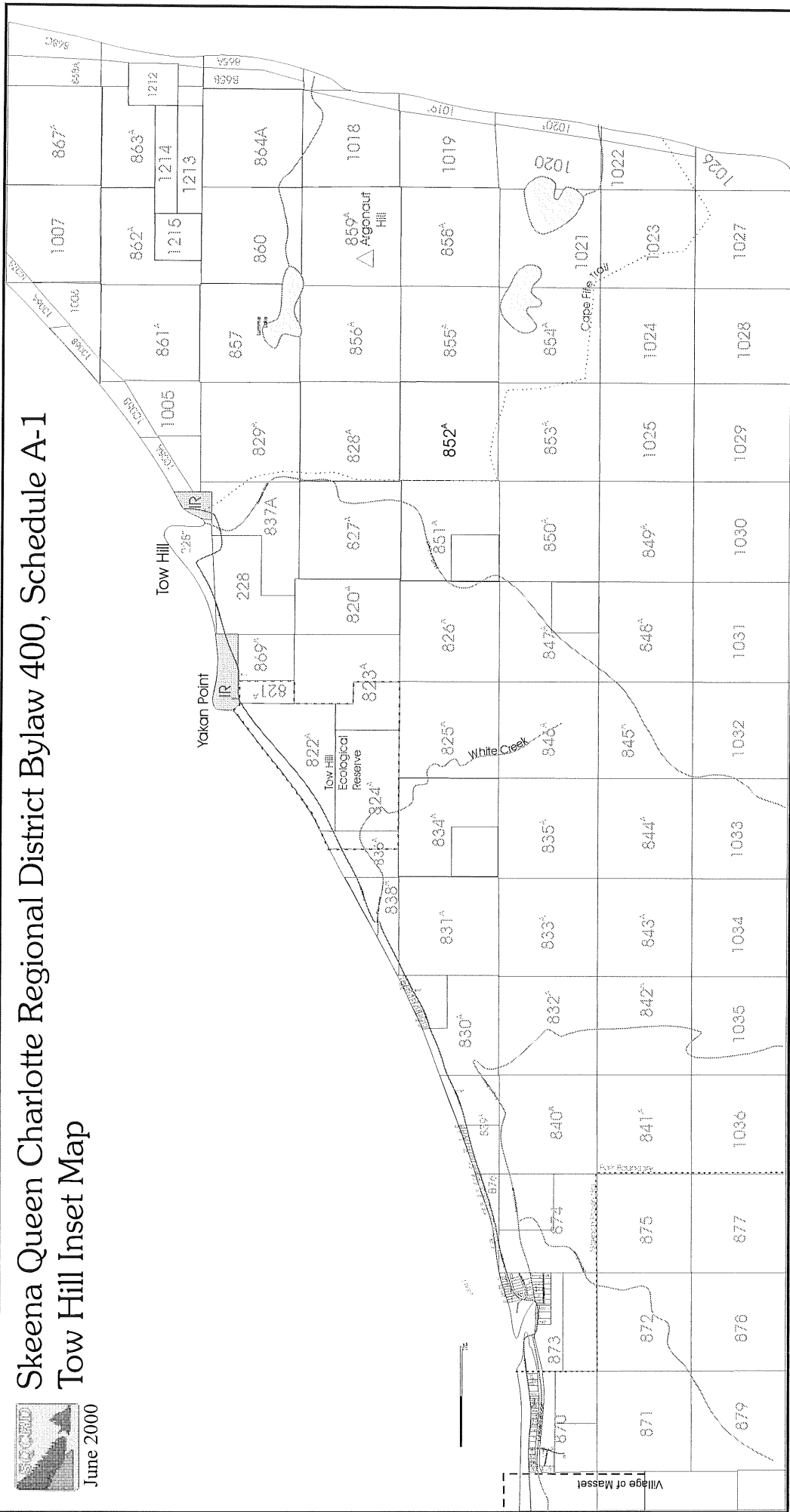
Highway 16





June 2000

Skeena Queen Charlotte Regional District Bylaw 400, Schedule A-1 Tow Hill Inset Map



Bylaw 400, Map Schedule A-2 Rural Port, South Masset Inset



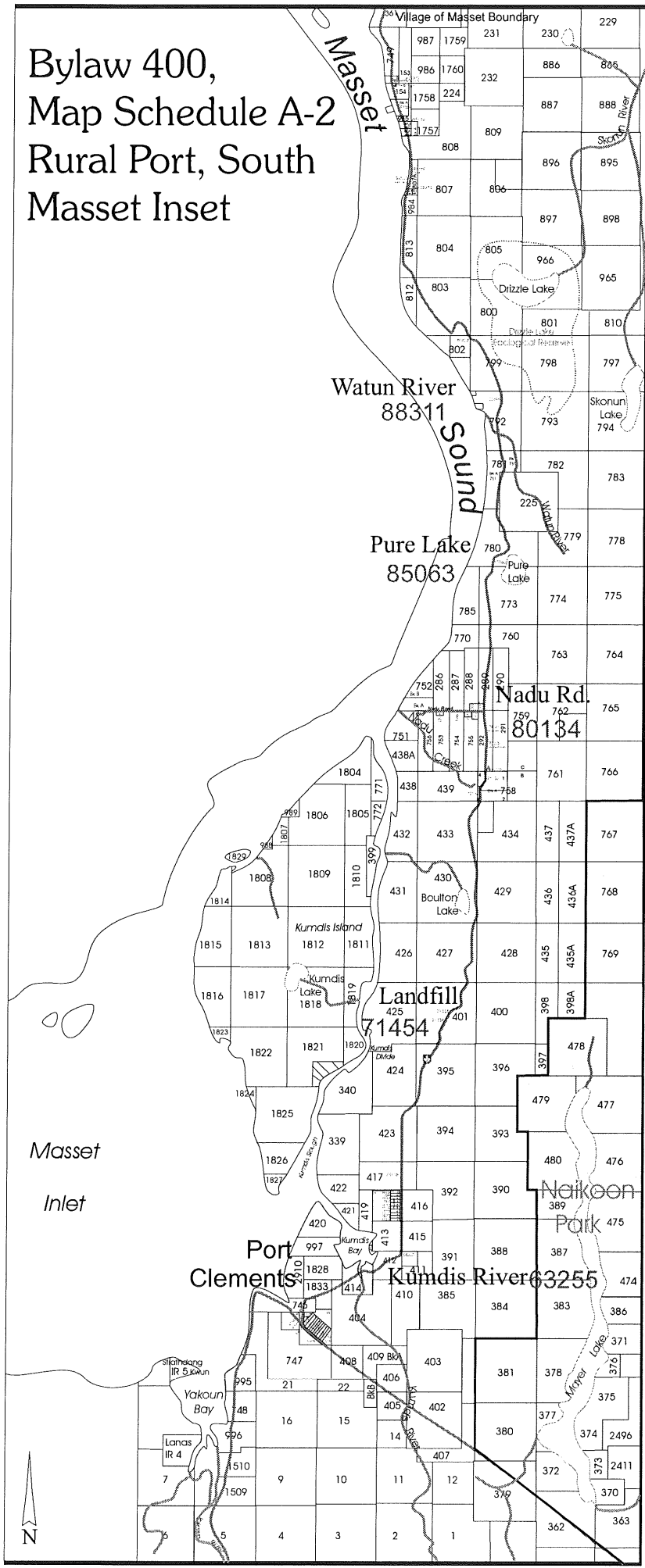
August, 2000

Skeena Queen Charlott Regional District

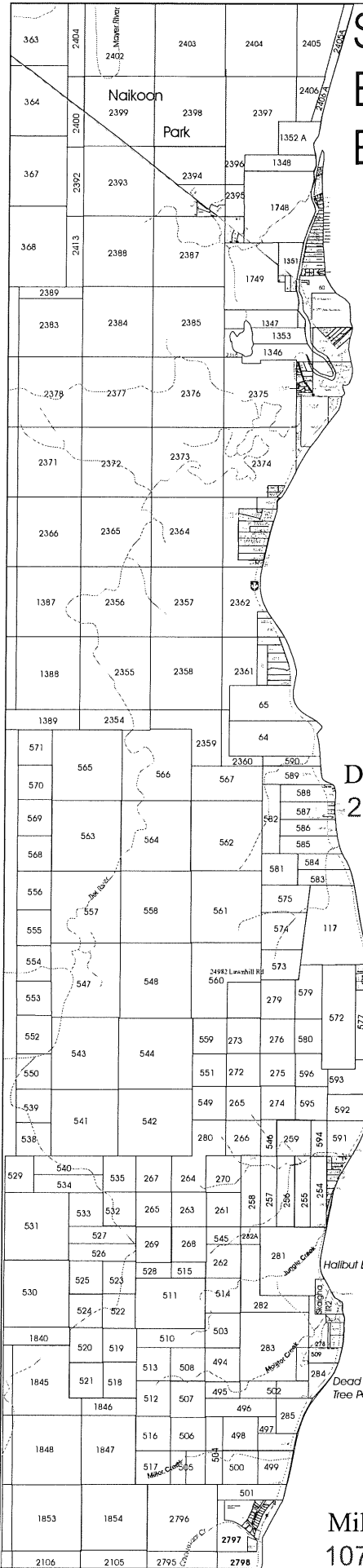
Main Principals

House numbers are generated using the distance from a fixed zero starting point: The zero start for the Hwy 16 corridor is the traffic lights at Skidegate Landing; The zero start for Tow Hill Road is the Masset Causeway

- Odd house numbers are located on the east and north side of roadways
- Even house numbers are located on the west and south side of roadways
- New house numbers will be assigned by measuring the distance (in meters) to the driveway access of the property from the fixed zero point.
- Only dwellings and places of business will be numbered.
- Properties are numbered to the roadway which their driveway access is located.
- The primary access driveway will be numbered in the case of a 'U' shaped drive.
- Properties on secondary roads will be measured from a zero starting point at the intersection of their origin.
- Trailer parks and multi unit buildings will be assigned a numeric suffix, i.e.: 44608_1, 44608_2
- When there is more than 1 dwelling per lot, 'A' and 'B' designations will be given in the order which dwellings appear on the driveway. (i.e.: first home which appears receives 'A', second home further down the driveway receives 'B')
- When multiple buildings per lot require numbers which do not appear in a linear fashion, alpha-numeric numbering will be at the discretion of the property owners but recommended to occur in a clockwise direction.
- In the case of property access easements (unmaintained highways right of way, or private shared driveways) which serve 3 or less lots, the dwellings will be numbered alpha-numerically in accordance with previous principals.
- Strata title properties will be numbered alpha-numerically in accordance with previous principals.



Skeena Queen Charlotte Regional District Bylaw 400, Map Schedule A-3 East Coast Inset



Beitush Rd.
42083

Wiggins Rd.
39140

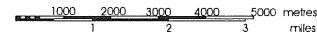
Davis Rd.
29269

Lawnhill Rd.
20452

Miller Creek Rd.
10788



August, 2000



Main Principals

House numbers are generated using the distance from a fixed zero starting point: The zero start for the Hwy 16 corridor is the traffic lights at Skidegate Landing; The zero start for Tow Hill Road is the Masset Causeway.

- Odd house numbers are located on the east and north side of roadways
- Even house numbers are located on the west and south side of roadways
- New house numbers will be assigned by measuring the distance (in meters) to the driveway access of the property from the fixed zero point.
- Only dwellings and places of business will be numbered.
- Properties are numbered to the roadway which their driveway access is located.
- The primary access driveway will be numbered in the case of a 'U' shaped drive.
- Properties on secondary roads will be measured from a zero starting point at the intersection of their origin.
- Trailer parks and multi unit buildings will be assigned a numeric suffix, i.e.: 44608_1, 44608_2
- When there is more than 1 dwelling per lot, 'A' and 'B' designations will be given in the order which dwellings appear on the driveway. (i.e.: first home which appears receives 'A', second home further down the driveway receives 'B')
- When multiple buildings per lot require numbers which do not appear in a linear fashion, alpha-numeric numbering will be at the discretion of the property owners but recommended to occur in a clockwise direction.
- In the case of property access easements (unmaintained highways right of way, or private shared driveways) which serve 3 or less lots, the dwellings will be numbered alpha-numerically in accordance with previous principals.
- Strata title properties will be numbered alpha-numerically in accordance with previous principals.